

Retail Recruitment from the **Experts in Retail.**



Retail Matches



**WE'D DRIVE
RETAIL.**

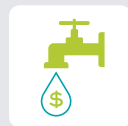
IT'S WHAT **WE** DO.

We are Buxton. We are the experts in driving retail growth. The more than 700 communities that have partnered with us have opened more than 40 million square feet of new retail space.

We use the same methodology used by leading retail and restaurant brands when making real estate growth decisions. The solution we deliver is exactly what a retailer wants and needs to see prior to making a real estate decision.



Retail Matches



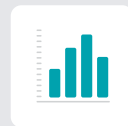
Leakage
Surplus Report



Healthcare
Report



Drive Time
Trade Area



Demographic
Report

Buxton[®]

Potential Retailer



california
PIZZA KITCHEN

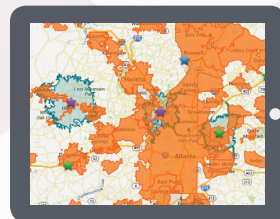


Trade Area
15 Min



Customer Profile
Match

SCOUT
TOUCH



MOBILIZE

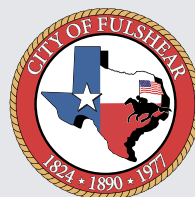
Access information using SCOUT.
No matter where your work takes you, you'll be connected.



SCOUT IS YOUR RETAIL RECRUITMENT TOOL.

SCOUT clearly and simply illustrates your city's development potential based on customers, where they are located, and the value of those customers to a retail or restaurant concept. The SCOUT platform gives you access to the best retail and restaurant matches for your community.

"In our retail attraction efforts, the city of Bloomington uses the Buxton SCOUT program on a daily basis."



"Buxton has been invaluable in marketing to interested businesses by showing them exactly how our trade area spends their money."

SCOUT.
ANSWERS AT THE TOUCH OF A BUTTON.

ANALYTICS

Analytics drive smart decisions. Easily understand your retail potential and quickly begin the recruitment process.



INVEST IN YOUR COMMUNITY.

We help you recruit new retailers to increase tax revenue, grow your local businesses and jump start your economic development efforts.

We assist city leaders with the data, insights and analytics necessary to craft a winning strategy for growth, bringing essential retail and services to your market and enhancing quality of life for your citizens.





CITY SERVICES

Apply analytics across your city services to optimize services at libraries, parks and recreation, emergency services and much more.



ECONOMIC DEVELOPMENT

We provide the tools you need to recruit retail and retain and grow local businesses.



HEALTHCARE NEEDS

Understand the gaps in supply and demand for major healthcare specialties in your community.



PLANNING INSIGHTS

As your city grows, understanding the shifts in your market is crucial. Our insights include new mover impact, life stages, race and ethnicity trends and much more.



VISITOR INSIGHTS

Identify the visitors coming to your city for events, cultural attractions, conventions and conferences so you can maximize budget dollars.

Buxton[®]

KNOW YOUR **POTENTIAL.**

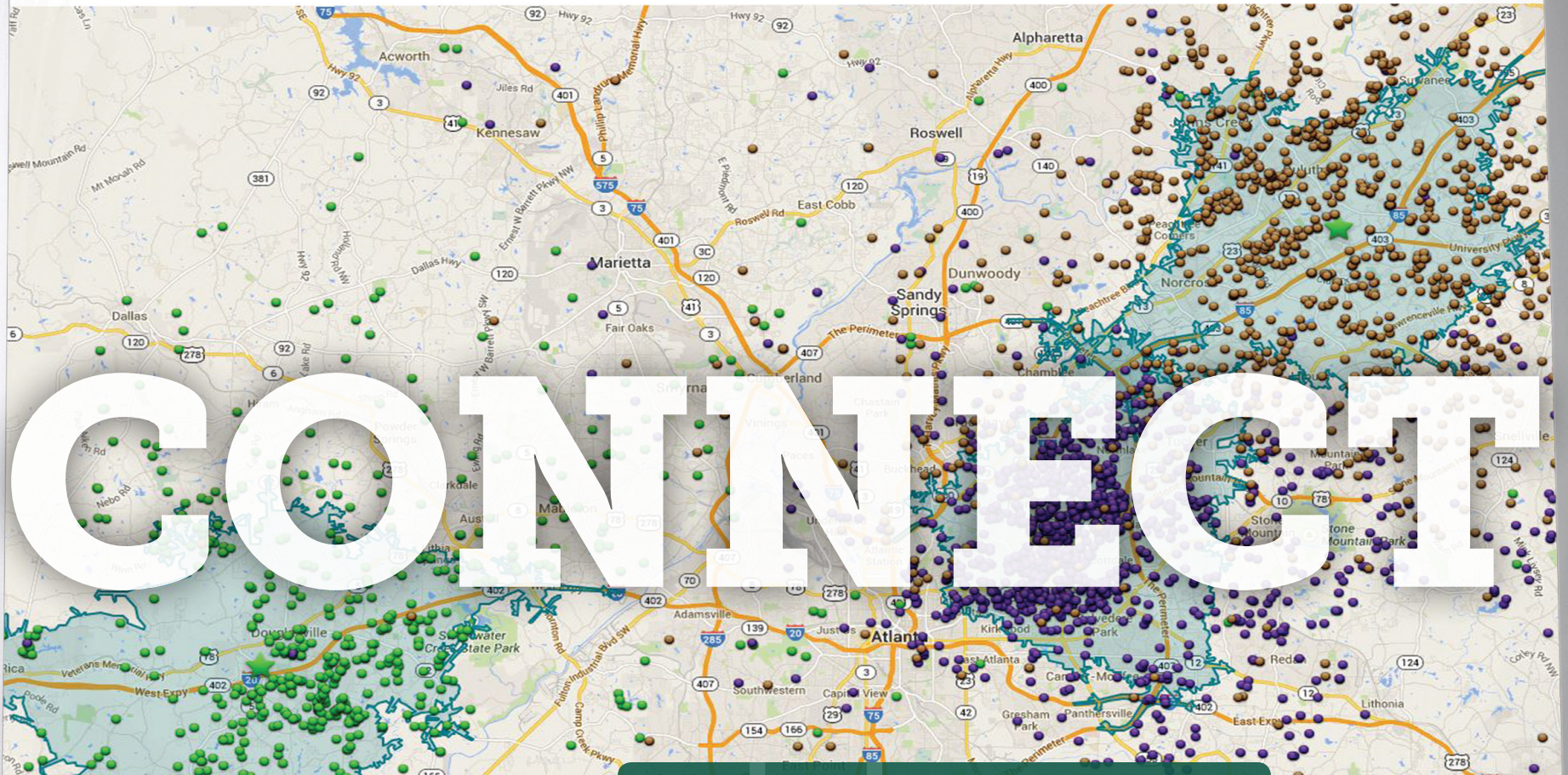
As your community grows, are you fully capturing the new citizens and households in your trade area? Census data and demographics alone don't tell the whole story. Our analysis takes your city to the next level of growth – fully preparing you to sell your city to potential retail and restaurant brands.

RETAIL MATCHING

With SCOUT you have access to your targeted retail matches, arming you with the marketing validation necessary for pursuit.

RETAIN AND SUPPORT LOCAL BUSINESSES

SCOUT gives local business owners instant access to business intelligence, giving them the data they need to be more competitive in the market.



STOP RETAIL LEAKAGE

Understand where you have gaps in the market and build a strategy to retain consumer dollars within your city limits.



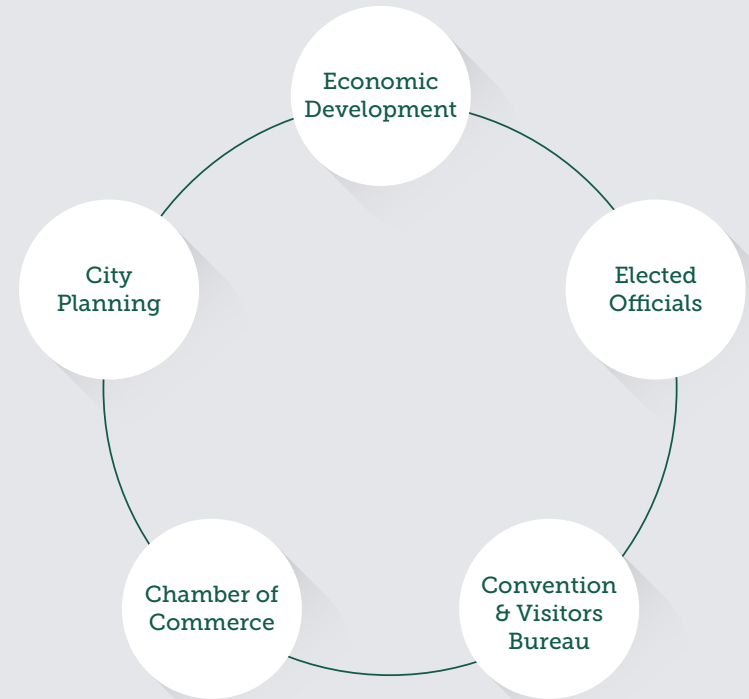
GROW WITH DEMAND

You will have the ability to truly communicate the demand for goods and services with accurate data and analytics.



CONNECT YOUR CITY LEADERS.

SCOUT provides city leaders with a data-driven approach to city management, giving decision-makers the tools necessary to create and execute growth strategies.



GROW WITH US.

1-888-2BUXTON | buxton@buxtonco.com | www.buxtonco.com





GROW WITH US. 1-888-2BUXTON | buxton@buxtonco.com | www.buxtonco.com